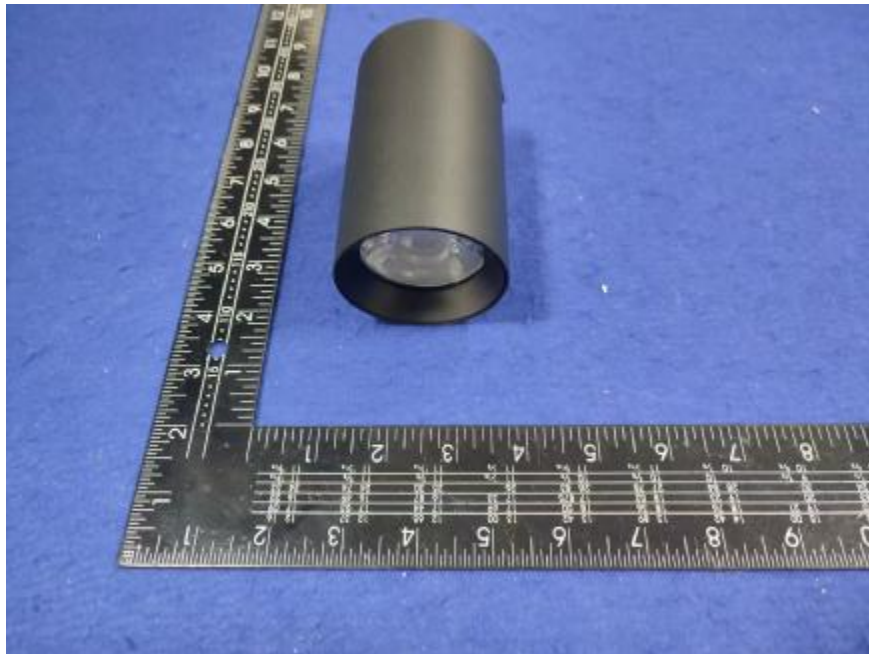


## Luminaire Photograph



Light Output Ratio:	84.3%	
Luminaire Power:	14.84 W	
SHR Nominal:	0.00	Calculated using the TM5
SHR Maximum:	0.30	fine grid method.

C Range: 0 - 360DEG  
C Interval: 30.0DEG  
Test Speed: HIGH  
Temperature: 25.3 °C  
Operators: zoe  
Test Date: 2025-01-02

γ Range: 0 - 180DEG  
γ Interval: 1.0DEG  
Test System: EVERFINE GO-SPEX500\_V1 SYSTEM V2.00.461  
Humidity: 65.0%  
Test Distance: 3.160m [K=1.0000]  
Remarks: LAMP: BXRE-30G10TH-A-83 Ra: 90  
LENS: PM-0132 15R  
NOT DRIVER: 48V  
30minutes warm-up

## LUMINOUS INTENSITY DISTRIBUTION DIAGRAM

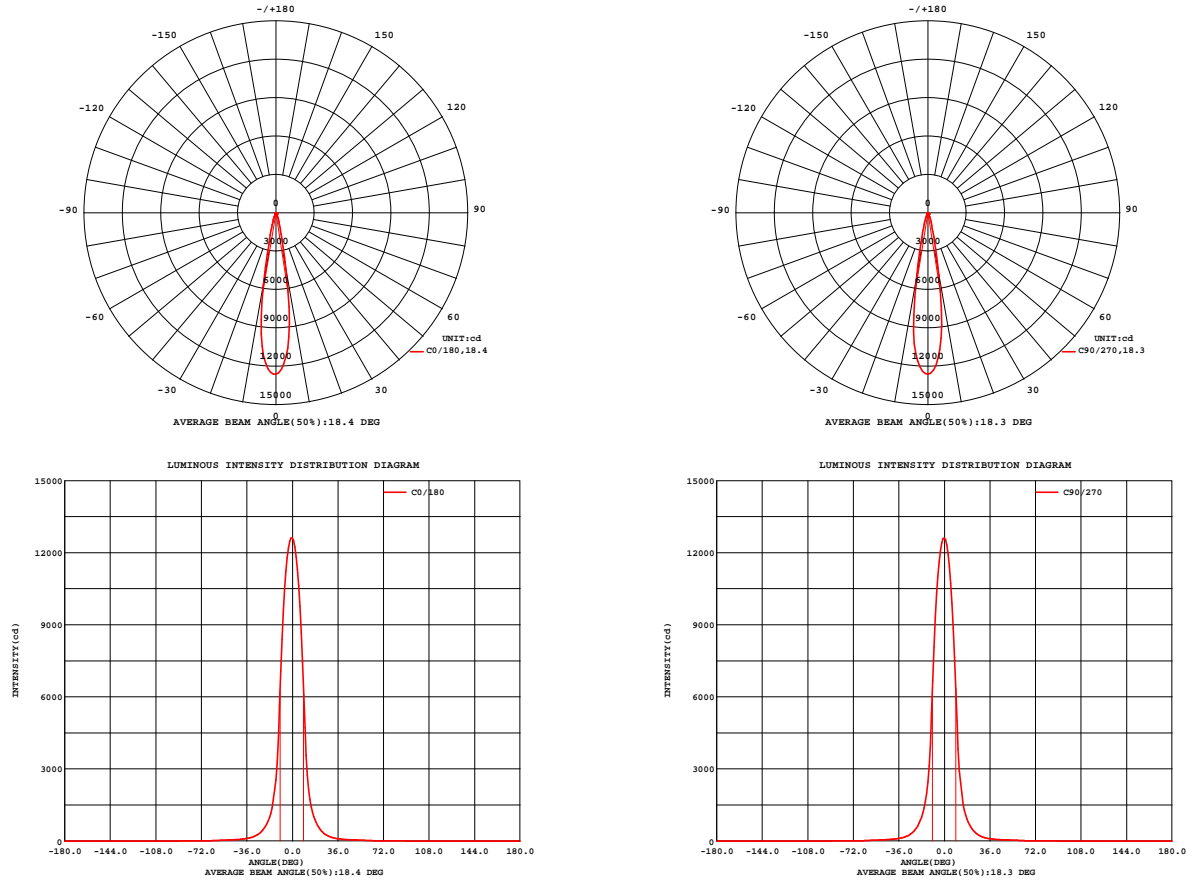


Fig. C0/C180

Fig. C90/C270

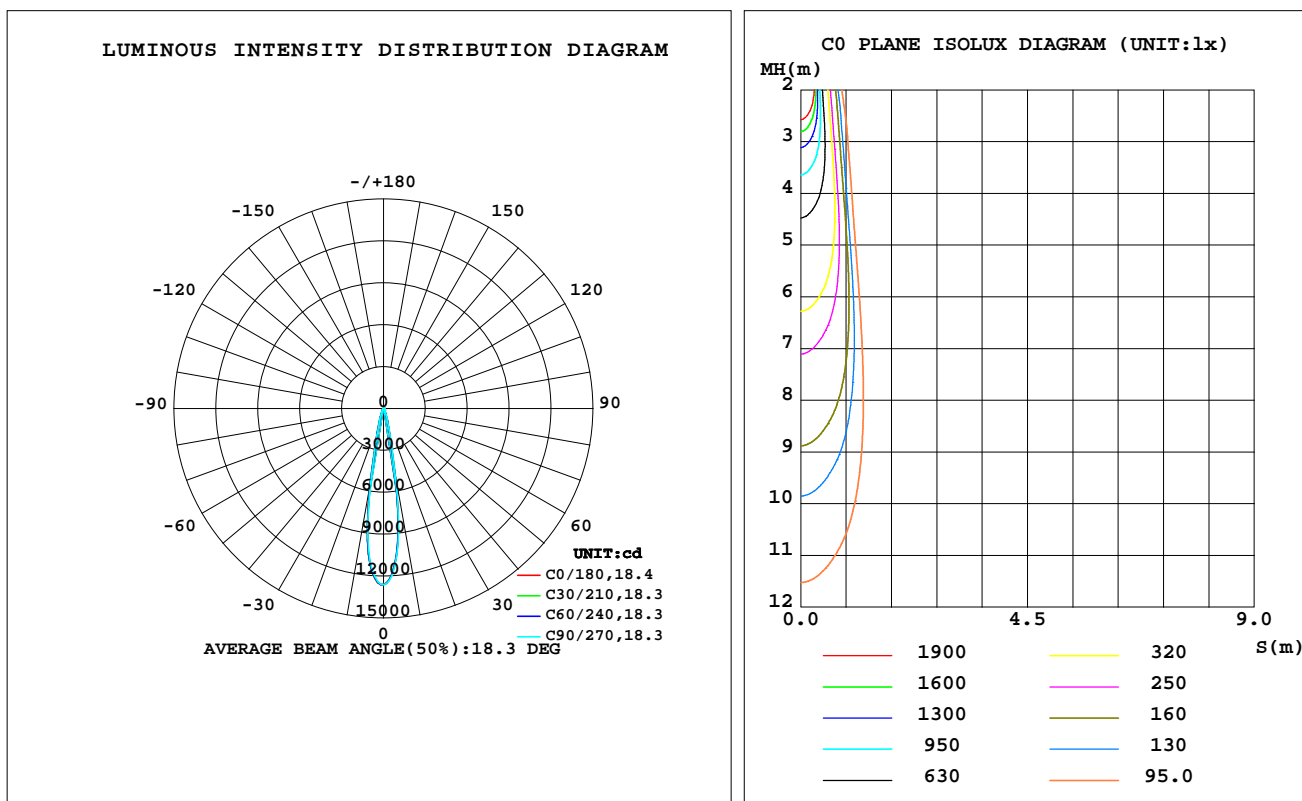
C Range: 0 - 360DEG  
C Interval: 30.0DEG  
Test Speed: HIGH  
Temperature: 25.3 °C  
Operators: zoe  
Test Date: 2025-01-02

γ Range: 0 - 180DEG  
γ Interval: 1.0DEG  
Test System: EVERFINE GO-SPEX500\_V1 SYSTEM V2.00.461  
Humidity: 65.0%  
Test Distance: 3.160m [K=1.0000]  
Remarks: LAMP: BXRE-30G10TH-A-83 Ra: 90  
LENS: PM-0132 15R  
NOT DRIVER: 48V  
30minutes warm-up

## LUMINAIRE PHOTOMETRIC TEST REPORT

Test:U:47.997V I:0.3092A P:14.841W PF:1.0000 Freq:49.99Hz Lamp Flux:1994.65x1 lm		
NAME: OZ48-SA-HE-64	TYPE:	WEIGHT:
SPEC.: 3000K	DIM.:	SERIAL No.: 2501020005
MFR.: RISE	SUR.: 0.002826m2	Shielding Angle:

DATA OF LAMP		PHOTOMETRIC DATA Eff: 113.35 lm/W			
MODEL	Brideglux	Imax(cd)	12614	S/MH(C0/180)	0.30
NOMINAL POWER(W)	15	LOR(%)	84.3	S/MH(C90/270)	0.30
RATED VOLTAGE(V)	48	TOTAL FLUX(lm)	1682.2	$\eta$ UP,DN(C0-180)	0.0,41.1
NOMINAL FLUX(lm)	1994.65	CIE CLASS	DIRECT	$\eta$ UP,DN(C180-360)	0.0,43.3
LAMPS INSIDE	1	$\eta$ up(%)	0.0	CIBSE SHR NOM	0.00
TEST VOLTAGE(V)	48	$\eta$ down(%)	84.3	CIBSE SHR MAX	0.30



C Range: 0 - 360DEG  
C Interval: 30.0DEG  
Test Speed: HIGH  
Temperature:25.3℃  
Operators:zoe  
Test Date:2025-01-02

$\gamma$  Range: 0 - 180DEG  
 $\gamma$  Interval: 1.0DEG  
Test System:EVERFINE GO-SPEX500\_V1 SYSTEM V2.00.461  
Humidity:65.0%  
Test Distance:3.160m [K=1.0000]  
Remarks: LAMP:BXRE-30G10TH-A-83 Ra:90  
LENS:PM-0132 15R  
NOT DRIVER:48V  
30minutes warm-up

## ZONAL FLUX DIAGRAM

### ZONAL FLUX DIAGRAM:

$\gamma$	C0	C45	C90	C135	C180	C225	C270	C315	$\gamma$	$\Phi$ zone	$\Phi$ total	%lum,lamp
10	472.0	477.6	499.9	535.2	568.1	557.7	530.1	495.4	0- 10	855.1	855.1	50.8,42.9
20	64.92	64.79	67.30	71.06	72.68	74.63	74.38	68.45	10- 20	506.0	1361	80.9,68.2
30	16.89	16.46	16.92	17.62	19.38	19.36	18.81	17.60	20- 30	164.5	1526	90.7,76.5
40	7.040	7.066	7.107	7.187	7.597	7.805	7.814	7.245	30- 40	71.42	1597	94.9,80.1
50	4.206	4.300	4.321	4.365	4.372	4.493	4.429	4.345	40- 50	42.79	1640	97.5,82.2
60	2.153	2.259	2.278	2.196	2.139	2.174	2.187	2.158	50- 60	29.41	1669	99.2,83.7
70	0.4599	0.4994	0.5220	0.4945	0.4571	0.4648	0.4832	0.4665	60- 70	11.66	1681	99.9,84.3
80	0.0108	0.0080	0.0100	0.0084	0.0094	0.0076	0.0090	0.0068	70- 80	1.296	1682	100,84.3
90	0	0	0	0	0	0	0	0	80- 90	0.0662	1682	100,84.3
100	0	0	0	0	0	0	0	0	90-100	0	1682	100,84.3
110	0	0	0	0	0	0	0	0	100-110	0	1682	100,84.3
120	0	0	0	0	0	0	0	0	110-120	0	1682	100,84.3
130	0	0	0	0	0	0	0	0	120-130	0	1682	100,84.3
140	0	0	0	0	0	0	0	0	130-140	0	1682	100,84.3
150	0	0	0	0	0	0	0	0	140-150	0	1682	100,84.3
160	0	0	0	0	0	0	0	0	150-160	0	1682	100,84.3
170	0	0	0	0	0	0	0	0	160-170	0	1682	100,84.3
180	0	0	0	0	0	0	0	0	170-180	0	1682	100,84.3
DEG	LUMINOUS INTENSITY:X10cd									UNIT:lm		

C Range: 0 - 360DEG  
C Interval: 30.0DEG  
Test Speed: HIGH  
Temperature:25.3℃  
Operators:zoe  
Test Date:2025-01-02

$\gamma$  Range: 0 - 180DEG  
 $\gamma$  Interval: 1.0DEG  
Test System:EVERFINE GO-SPEX500\_V1 SYSTEM V2.00.461  
Humidity:65.0%  
Test Distance:3.160m [K=1.0000]  
Remarks: LAMP:BXRE-30G10TH-A-83 Ra:90  
LENS:PM-0132 15R  
NOT DRIVER:48V  
30minutes warm-up

### LUMINANCE LIMITATION CURVES

Test:U:47.997V I:0.3092A P:14.841W PF:1.0000 Freq:49.99Hz  
Lamp Flux:1994.65x1 lm

NAME: OZ48-SA-HE-64

TYPE:

WEIGHT:

SPEC.: 3000K

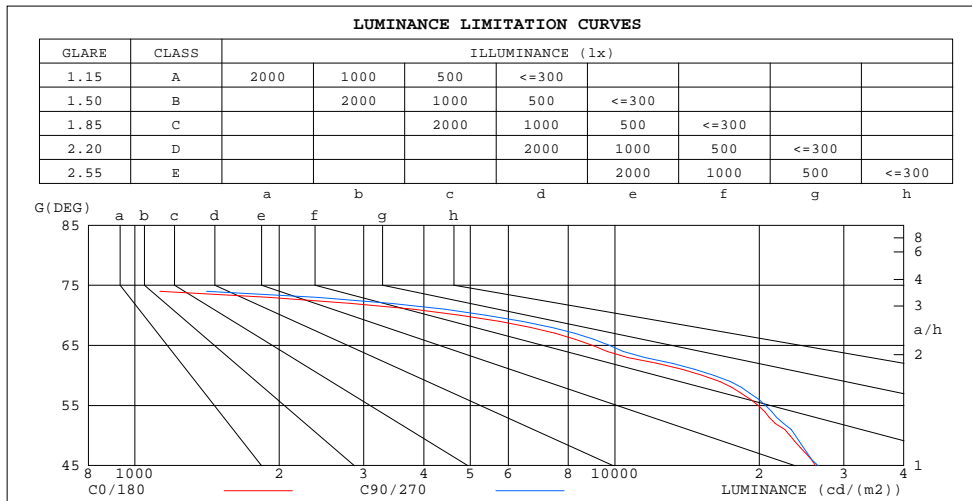
DIM.:

SERIAL No.: 2501020005

MFR.: RISE

SUR.: 0.002826m2

Shielding Angle:



LUMINANCE cd/(m2)		
G(180)	C0/180	C90/270
85	354	326
80	219	205
75	449	557
70	4763	5399
65	8987	9747
60	15249	16112
55	19918	20627
50	23174	23776
45	26207	26518

C Range: 0 - 360DEG  
C Interval: 30.0DEG  
Test Speed: HIGH  
Temperature:25.3℃  
Operators:zoe  
Test Date:2025-01-02

γ Range: 0 - 180DEG  
γ Interval: 1.0DEG  
Test System:EVERFINE GO-SPEX500\_V1 SYSTEM V2.00.461  
Humidity:65.0%  
Test Distance:3.160m [K=1.0000]  
Remarks: LAMP:BXRE-30G10TH-A-83 Ra:90  
LENS:PM-0132 15R  
NOT DRIVER:48V  
30minutes warm-up

## CU AND LUMINAIRE BUDGETARY ESTIMATE DIAGRAM

Test:U:47.997V I:0.3092A P:14.841W PF:1.0000 Freq:49.99Hz  
Lamp Flux:1994.65x1 lm

NAME: OZ48-SA-HE-64

TYPE:

WEIGHT:

SPEC.: 3000K

DIM.:

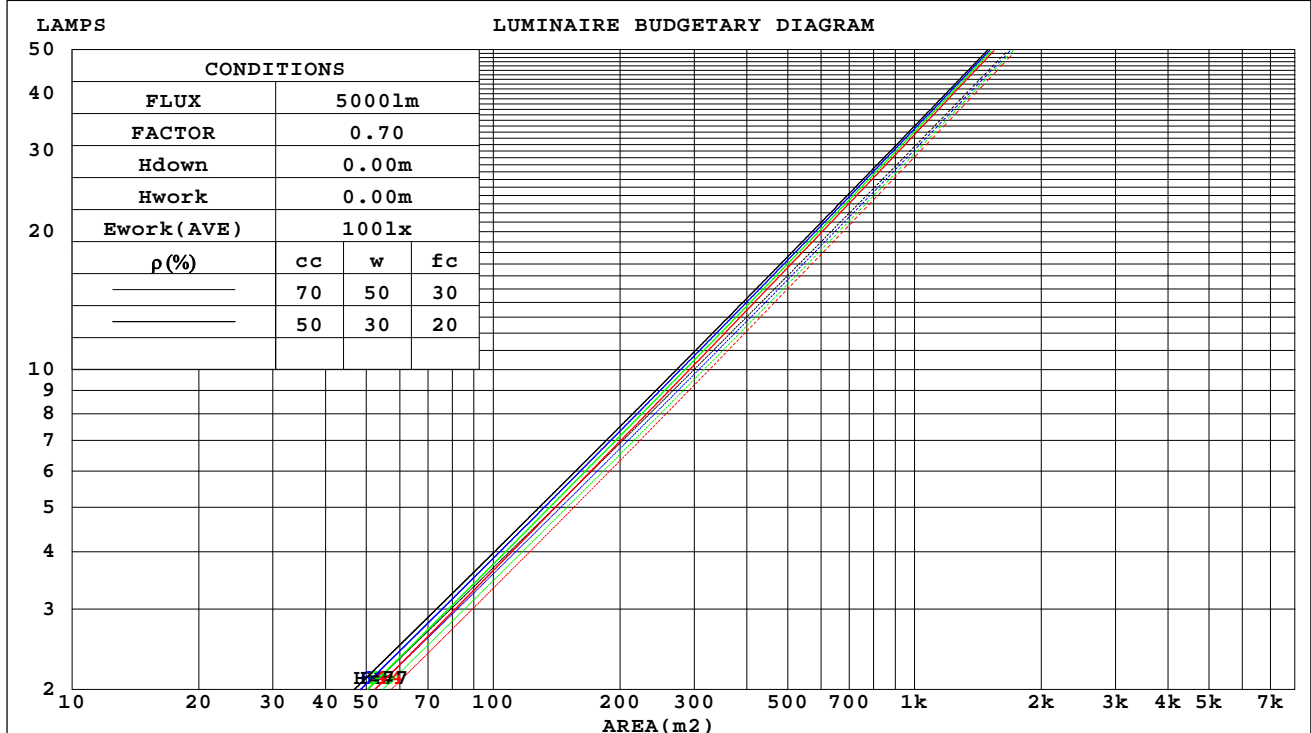
SERIAL No.: 2501020005

MFR.: RISE

SUR.: 0.002826m2

Shielding Angle:

$\rho_{cc}$	80%			70%			50%			30%			10%			0
$\rho_w$	50%	30%	10%	50%	30%	10%	50%	30%	10%	50%	30%	10%	50%	30%	10%	0
$\rho_{fc}$	20%			20%			20%			20%			20%			0
RCR	RCR:Room Cavity Ratio			Coefficients of Utilization(CU)												
0.0	1.00	1.00	1.00	.98	.98	.98	.94	.94	.94	.90	.90	.90	.86	.86	.86	.84
1.0	.95	.94	.92	.94	.92	.91	.90	.89	.88	.87	.86	.86	.84	.84	.83	.82
2.0	.91	.89	.87	.90	.87	.86	.87	.85	.84	.85	.83	.82	.82	.81	.80	.79
3.0	.87	.84	.82	.86	.84	.81	.84	.82	.80	.82	.80	.79	.80	.79	.78	.77
4.0	.84	.81	.79	.83	.80	.78	.82	.79	.77	.80	.78	.76	.79	.77	.76	.75
5.0	.81	.78	.76	.81	.78	.75	.79	.77	.75	.78	.76	.74	.77	.75	.73	.73
6.0	.79	.76	.73	.78	.75	.73	.77	.75	.73	.76	.74	.72	.75	.73	.72	.71
7.0	.77	.73	.71	.76	.73	.71	.75	.73	.71	.75	.72	.70	.74	.72	.70	.69
8.0	.75	.72	.69	.74	.71	.69	.74	.71	.69	.73	.71	.69	.72	.70	.68	.68
9.0	.73	.70	.68	.73	.70	.68	.72	.69	.67	.71	.69	.67	.71	.69	.67	.66
10.0	.71	.68	.66	.71	.68	.66	.71	.68	.66	.70	.68	.66	.70	.67	.66	.65



C Range: 0 - 360DEG  
C Interval: 30.0DEG  
Test Speed: HIGH  
Temperature:25.3℃  
Operators:zoe  
Test Date:2025-01-02

$\gamma$  Range: 0 - 180DEG  
 $\gamma$  Interval: 1.0DEG  
Test System:EVERFINE GO-SPEX500\_V1 SYSTEM V2.00.461  
Humidity:65.0%  
Test Distance:3.160m [K=1.0000]  
Remarks: LAMP:BXRE-30G10TH-A-83 Ra:90  
LENS:PM-0132 15R  
NOT DRIVER:48V  
30minutes warm-up

### WEC AND CCEC

Test:U:47.997V I:0.3092A P:14.841W PF:1.0000 Freq:49.99Hz Lamp Flux:1994.65x1 lm		
NAME: OZ48-SA-HE-64	TYPE:	WEIGHT:
SPEC.: 3000K	DIM.:	SERIAL No.: 2501020005
MFR.: RISE	SUR.: 0.002826m2	Shielding Angle:

pcc	80%			70%			50%			30%			10%			0
pw	50%	30%	10%	50%	30%	10%	50%	30%	10%	50%	30%	10%	50%	30%	10%	0
pfc	20%			20%			20%			20%			20%			0
RCR	RCR:Room Cavity Ratio						Wall Exitance Coefficients(WEC)									
0.0																
1.0	.112	.064	.020	.107	.061	.019	.096	.055	.018	.087	.050	.016	.078	.045	.015	
2.0	.104	.057	.018	.100	.055	.017	.091	.051	.016	.083	.047	.015	.076	.043	.014	
3.0	.097	.052	.015	.093	.050	.015	.086	.047	.014	.079	.043	.013	.073	.041	.013	
4.0	.090	.047	.014	.087	.046	.013	.081	.043	.013	.075	.041	.012	.070	.038	.012	
5.0	.084	.043	.012	.082	.042	.012	.077	.040	.012	.072	.038	.011	.067	.036	.011	
6.0	.079	.040	.011	.077	.039	.011	.073	.037	.011	.069	.036	.010	.065	.034	.010	
7.0	.075	.037	.010	.073	.036	.010	.069	.035	.010	.065	.034	.010	.062	.032	.009	
8.0	.071	.035	.010	.069	.034	.010	.066	.033	.009	.063	.032	.009	.060	.031	.009	
9.0	.067	.032	.009	.066	.032	.009	.063	.031	.009	.060	.030	.009	.057	.029	.008	
10.0	.064	.031	.009	.063	.030	.008	.060	.029	.008	.058	.029	.008	.055	.028	.008	

pcc	80%			70%			50%			30%			10%			0	
pw	50%	30%	10%	50%	30%	10%	50%	30%	10%	50%	30%	10%	50%	30%	10%	0	
pfc	20%			20%			20%			20%			20%			0	
RCR	RCR:Room Cavity Ratio						Ceiling Cavity Exitance Coefficients(CCEC)										
0.0	.161	.161	.161	.137	.137	.137	.094	.094	.094	.054	.054	.054	.017	.017	.017		
1.0	.142	.133	.125	.121	.114	.108	.083	.079	.074	.048	.045	.043	.015	.015	.014		
2.0	.126	.112	.100	.108	.096	.086	.074	.067	.060	.043	.039	.035	.014	.013	.011		
3.0	.114	.096	.081	.097	.082	.070	.067	.057	.049	.039	.033	.029	.012	.011	.010		
4.0	.103	.082	.067	.088	.071	.058	.061	.050	.041	.035	.029	.024	.011	.009	.008		
5.0	.094	.072	.056	.080	.062	.049	.055	.044	.034	.032	.026	.020	.010	.008	.007		
6.0	.086	.064	.048	.074	.055	.041	.051	.039	.029	.030	.023	.017	.010	.007	.006		
7.0	.079	.057	.041	.068	.049	.035	.047	.034	.025	.027	.020	.015	.009	.007	.005		
8.0	.073	.051	.035	.063	.044	.031	.044	.031	.022	.025	.018	.013	.008	.006	.004		
9.0	.068	.046	.031	.059	.040	.027	.041	.028	.019	.024	.017	.011	.008	.005	.004		
10.0	.064	.042	.027	.055	.036	.024	.038	.025	.017	.022	.015	.010	.007	.005	.003		

C Range: 0 - 360DEG  
C Interval: 30.0DEG  
Test Speed: HIGH  
Temperature:25.3℃  
Operators:zoe  
Test Date:2025-01-02

γ Range: 0 - 180DEG  
γ Interval: 1.0DEG  
Test System:EVERFINE GO-SPEX500\_V1 SYSTEM V2.00.461  
Humidity:65.0%  
Test Distance:3.160m [K=1.0000]  
Remarks: LAMP:BXRE-30G10TH-A-83 Ra:90  
LENS:PM-0132 15R  
NOT DRIVER:48V  
30minutes warm-up

## UGR(Unified Glare Rating) Table

Test:U:47.997V I:0.3092A P:14.841W PF:1.0000 Freq:49.99Hz Lamp Flux:1994.65x1 lm										
NAME: OZ48-SA-HE-64					TYPE:			WEIGHT:		
SPEC.: 3000K					DIM.:			SERIAL No.: 2501020005		
MFR.: RISE					SUR.: 0.002826m2			Shielding Angle:		
ceiling/cavity	0.7	0.7	0.5	0.5	0.3	0.7	0.7	0.5	0.5	0.3
walls	0.5	0.3	0.5	0.3	0.3	0.5	0.3	0.5	0.3	0.3
working plane	0.2	0.2	0.2	0.2	0.2	0.2	0.2	0.2	0.2	0.2
Room dimensions	Viewed crosswise					Viewed endwise				
x = 2H y = 2H	13.6	14.2	13.8	14.3	14.5	13.7	14.3	13.9	14.4	14.6
3H	13.7	14.3	13.9	14.5	14.6	13.8	14.4	14.1	14.6	14.8
4H	13.6	14.2	13.9	14.4	14.6	13.8	14.3	14.0	14.5	14.7
6H	13.5	14.1	13.8	14.3	14.5	13.7	14.2	14.0	14.4	14.7
8H	13.5	14.0	13.8	14.2	14.5	13.6	14.1	13.9	14.4	14.6
12H	13.4	13.9	13.8	14.2	14.5	13.6	14.1	13.9	14.3	14.6
4H 2H	13.7	14.3	14.0	14.5	14.7	13.8	14.4	14.1	14.6	14.8
3H	13.9	14.4	14.2	14.6	14.9	14.0	14.5	14.3	14.7	15.0
4H	13.8	14.2	14.1	14.5	14.8	13.9	14.4	14.2	14.6	14.9
6H	13.7	14.1	14.0	14.4	14.7	13.8	14.2	14.2	14.5	14.9
8H	13.6	14.0	14.0	14.3	14.7	13.7	14.1	14.1	14.5	14.8
12H	13.6	13.9	14.0	14.3	14.7	13.7	14.0	14.1	14.4	14.8
8H 4H	13.6	14.0	14.0	14.4	14.7	13.8	14.1	14.1	14.5	14.8
6H	13.5	13.8	13.9	14.2	14.6	13.6	14.0	14.1	14.3	14.8
8H	13.5	13.7	13.9	14.1	14.6	13.6	13.9	14.0	14.3	14.7
12H	13.4	13.6	13.9	14.1	14.5	13.5	13.8	14.0	14.2	14.7
12H 4H	13.6	13.9	14.0	14.3	14.7	13.7	14.0	14.1	14.4	14.8
6H	13.5	13.7	13.9	14.1	14.6	13.6	13.9	14.0	14.3	14.7
8H	13.4	13.6	13.9	14.1	14.5	13.5	13.8	14.0	14.2	14.7
Variations with the observer position at spacings(CIE Pub.117):										
S = 1.0H	+ 0.9 / - 1.3					+ 0.8 / - 1.2				
1.5H	+ 0.9 / - 0.9					+ 0.9 / - 0.9				
2.0H	+ 1.3 / - 3.1					+ 1.3 / - 2.9				

CIE Pub.117, 1995 lm Total Lamp Luminous Flux Correct (8log(F/F0) = 2.4)  
Area: 0.002826 m2

C Range: 0 - 360DEG  
C Interval: 30.0DEG  
Test Speed: HIGH  
Temperature:25.3℃  
Operators:zoe  
Test Date:2025-01-02

γ Range: 0 - 180DEG  
γ Interval: 1.0DEG  
Test System:EVERFINE GO-SPEX500\_V1 SYSTEM V2.00.461  
Humidity:65.0%  
Test Distance:3.160m [K=1.0000]  
Remarks: LAMP:BXRE-30G10TH-A-83 Ra:90  
LENS:PM-0132 15R  
NOT DRIVER:48V  
30minutes warm-up



### UTILIZATION FACTORS TABLE

Test:U:47.997V I:0.3092A P:14.841W PF:1.0000 Freq:49.99Hz Lamp Flux:1994.65x1 lm		
NAME: OZ48-SA-HE-64	TYPE:	WEIGHT:
SPEC.: 3000K	DIM.:	SERIAL No.: 2501020005
MFR.: RISE	SUR.: 0.002826m2	Shielding Angle:

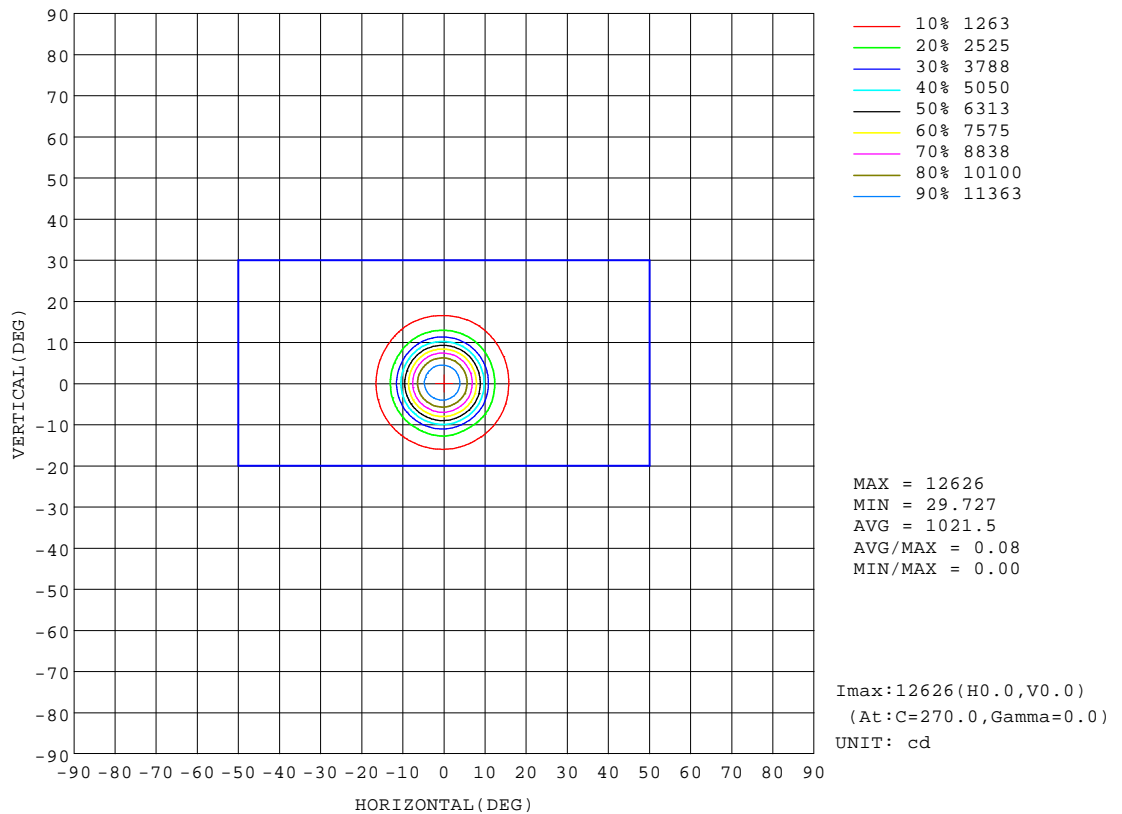
REFLECTANCE										
Ceiling	0.8	0.8	0.8	0.7	0.7	0.7	0.5	0.5	0.5	0
Walls	0.7	0.5	0.3	0.7	0.5	0.3	0.7	0.5	0.3	0
Working plane	0.2	0.2	0.2	0.2	0.2	0.2	0.2	0.2	0.2	0
ROOM INDEX	UTILIZATION FACTORS(PERCENT) $k(RI) \times RCR = 5$									
k = 0.60	75	69	66	74	69	66	73	69	66	63
0.80	81	76	73	80	76	73	79	75	72	69
1.00	84	80	77	84	79	76	82	79	76	73
1.25	88	83	80	87	83	80	85	82	79	76
1.50	90	86	83	89	85	83	87	84	82	78
2.00	92	88	86	91	88	85	88	86	84	80
2.50	93	90	88	92	89	87	89	87	85	80
3.00	94	92	89	93	91	89	90	88	87	81
4.00	96	94	92	94	93	91	91	90	89	83
5.00	97	95	94	95	94	93	92	91	90	84
ROOM INDEX	UF(total)									Direct
According to DIN EN 13032-2 2004			Suspended					SHRNOM = 1.25		

C Range: 0 - 360DEG  
C Interval: 30.0DEG  
Test Speed: HIGH  
Temperature:25.3℃  
Operators:zoe  
Test Date:2025-01-02

γ Range: 0 - 180DEG  
γ Interval: 1.0DEG  
Test System:EVERFINE GO-SPEX500\_V1 SYSTEM V2.00.461  
Humidity:65.0%  
Test Distance:3.160m [K=1.0000]  
Remarks: LAMP:BXRE-30G10TH-A-83 Ra:90  
LENS:PM-0132 15R  
NOT DRIVER:48V  
30minutes warm-up

## ISOCANDELA DIAGRAM

Test:U:47.997V I:0.3092A P:14.841W PF:1.0000 Freq:49.99Hz Lamp Flux:1994.65x1 lm		
NAME: OZ48-SA-HE-64	TYPE:	WEIGHT:
SPEC.: 3000K	DIM.:	SERIAL No.: 2501020005
MFR.: RISE	SUR.: 0.002826m2	Shielding Angle:

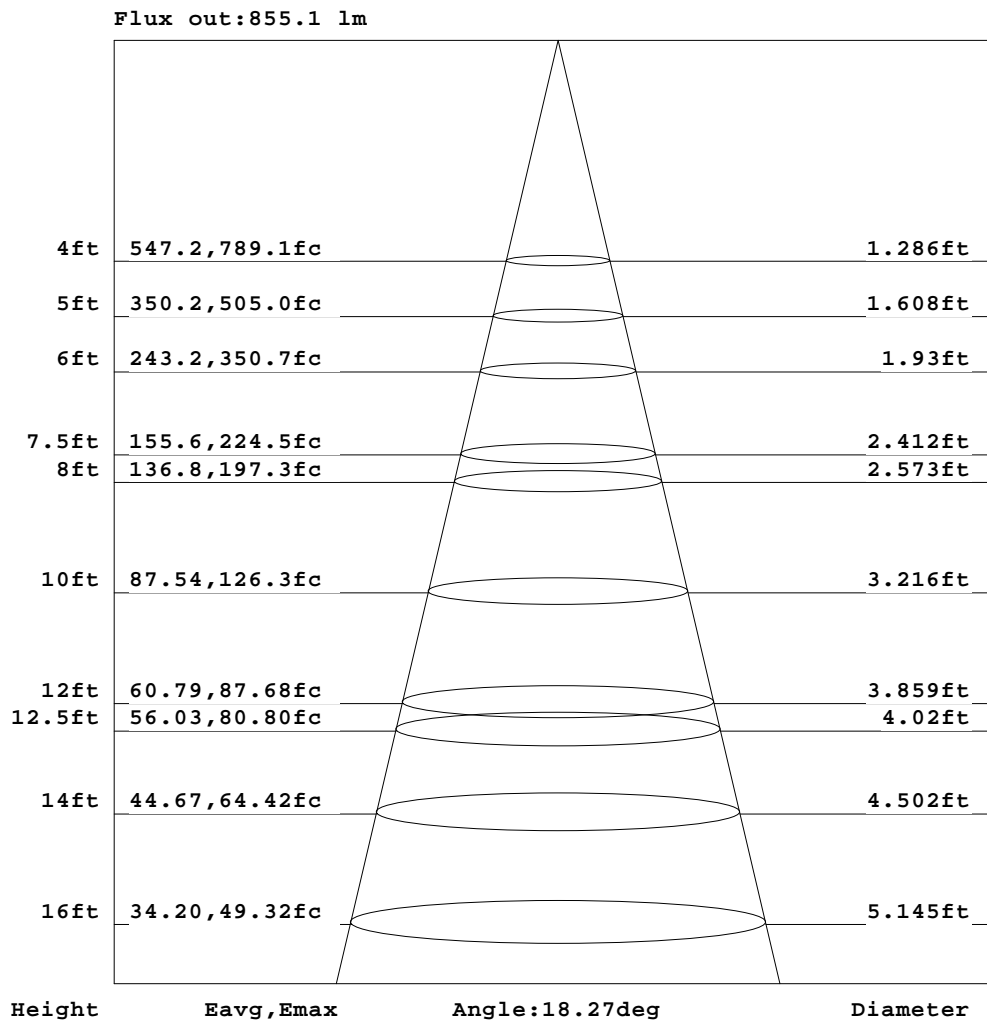


C Range: 0 - 360DEG  
C Interval: 30.0DEG  
Test Speed: HIGH  
Temperature:25.3℃  
Operators:zoe  
Test Date:2025-01-02

γ Range: 0 - 180DEG  
γ Interval: 1.0DEG  
Test System:EVERFINE GO-SPEX500\_V1 SYSTEM V2.00.461  
Humidity:65.0%  
Test Distance:3.160m [K=1.0000]  
Remarks: LAMP:BXRE-30G10TH-A-83 Ra:90  
LENS:PM-0132 15R  
NOT DRIVER:48V  
30minutes warm-up

## AAI Figure

Test:U:47.997V I:0.3092A P:14.841W PF:1.0000 Freq:49.99Hz Lamp Flux:1994.65x1 lm		
NAME: OZ48-SA-HE-64	TYPE:	WEIGHT:
SPEC.: 3000K	DIM.:	SERIAL No.: 2501020005
MFR.: RISE	SUR.: 0.002826m2	Shielding Angle:



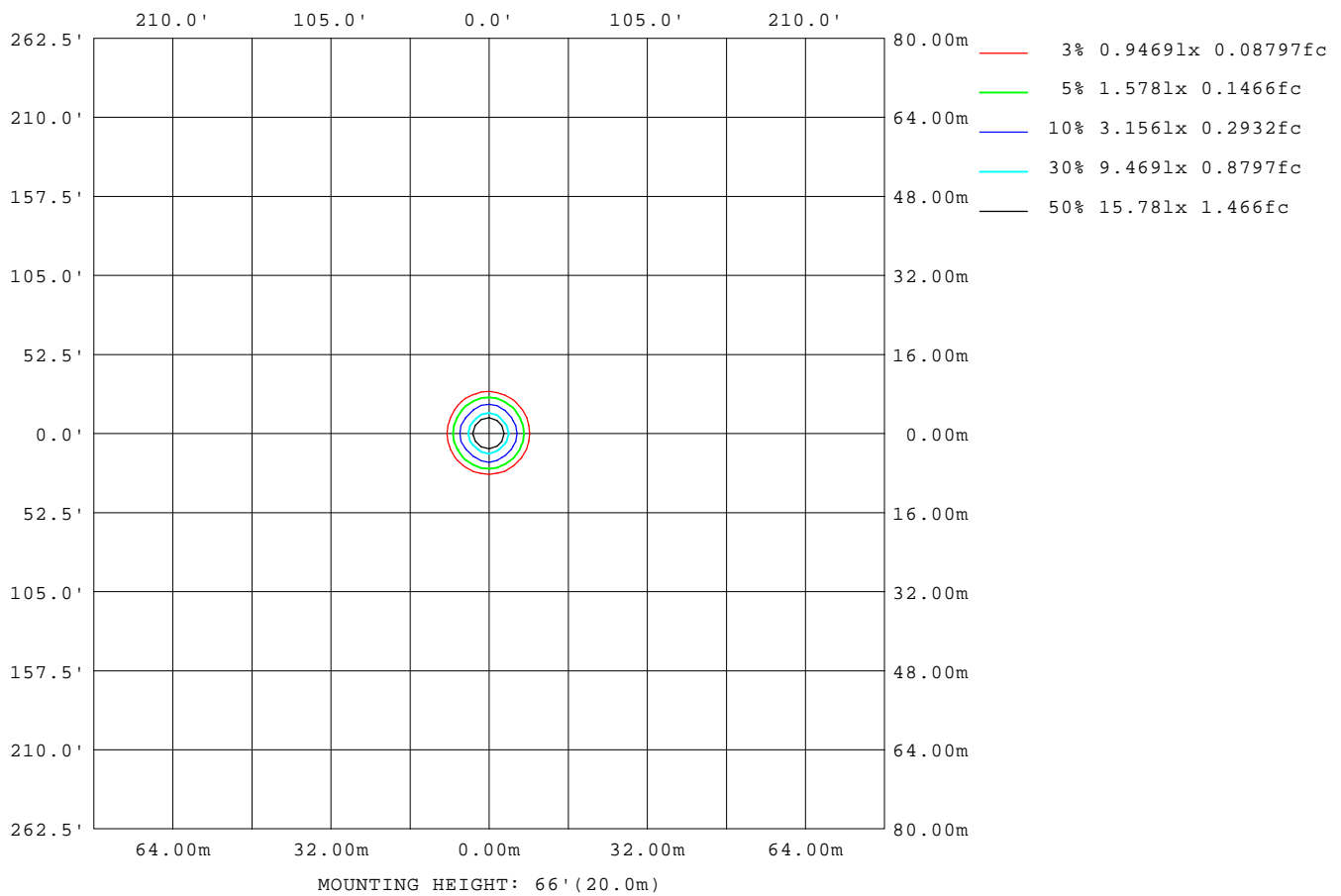
Note:The Curves indicate the illuminated area and the average illumination when the luminaire is at different distance.

C Range: 0 - 360DEG  
C Interval: 30.0DEG  
Test Speed: HIGH  
Temperature:25.3℃  
Operators:zoe  
Test Date:2025-01-02

γ Range: 0 - 180DEG  
γ Interval: 1.0DEG  
Test System:EVERFINE GO-SPEX500\_V1 SYSTEM V2.00.461  
Humidity:65.0%  
Test Distance:3.160m [K=1.0000]  
Remarks: LAMP:BXRE-30G10TH-A-83 Ra:90  
LENS:PM-0132 15R  
NOT DRIVER:48V  
30minutes warm-up

## ISOLUX DIAGRAM

Test:U:47.997V I:0.3092A P:14.841W PF:1.0000 Freq:49.99Hz Lamp Flux:1994.65x1 lm		
NAME: OZ48-SA-HE-64	TYPE:	WEIGHT:
SPEC.: 3000K	DIM.:	SERIAL No.: 2501020005
MFR.: RISE	SUR.: 0.002826m2	Shielding Angle:



C Range: 0 - 360DEG  
C Interval: 30.0DEG  
Test Speed: HIGH  
Temperature:25.3 °C  
Operators:zoe  
Test Date:2025-01-02

γ Range: 0 - 180DEG  
γ Interval: 1.0DEG  
Test System:EVERFINE GO-SPEX500\_V1 SYSTEM V2.00.461  
Humidity:65.0%  
Test Distance:3.160m [K=1.0000]  
Remarks: LAMP:BXRE-30G10TH-A-83 Ra:90  
LENS:PM-0132 15R  
NOT DRIVER:48V  
30minutes warm-up

## LED Avg.L Report

Test:U:47.997V I:0.3092A P:14.841W PF:1.0000 Freq:49.99Hz Lamp Flux:1994.65x1 lm		
NAME: OZ48-SA-HE-64	TYPE:	WEIGHT:
SPEC.: 3000K	DIM.:	SERIAL No.: 2501020005
MFR.: RISE	SUR.: 0.002826m2	Shielding Angle:

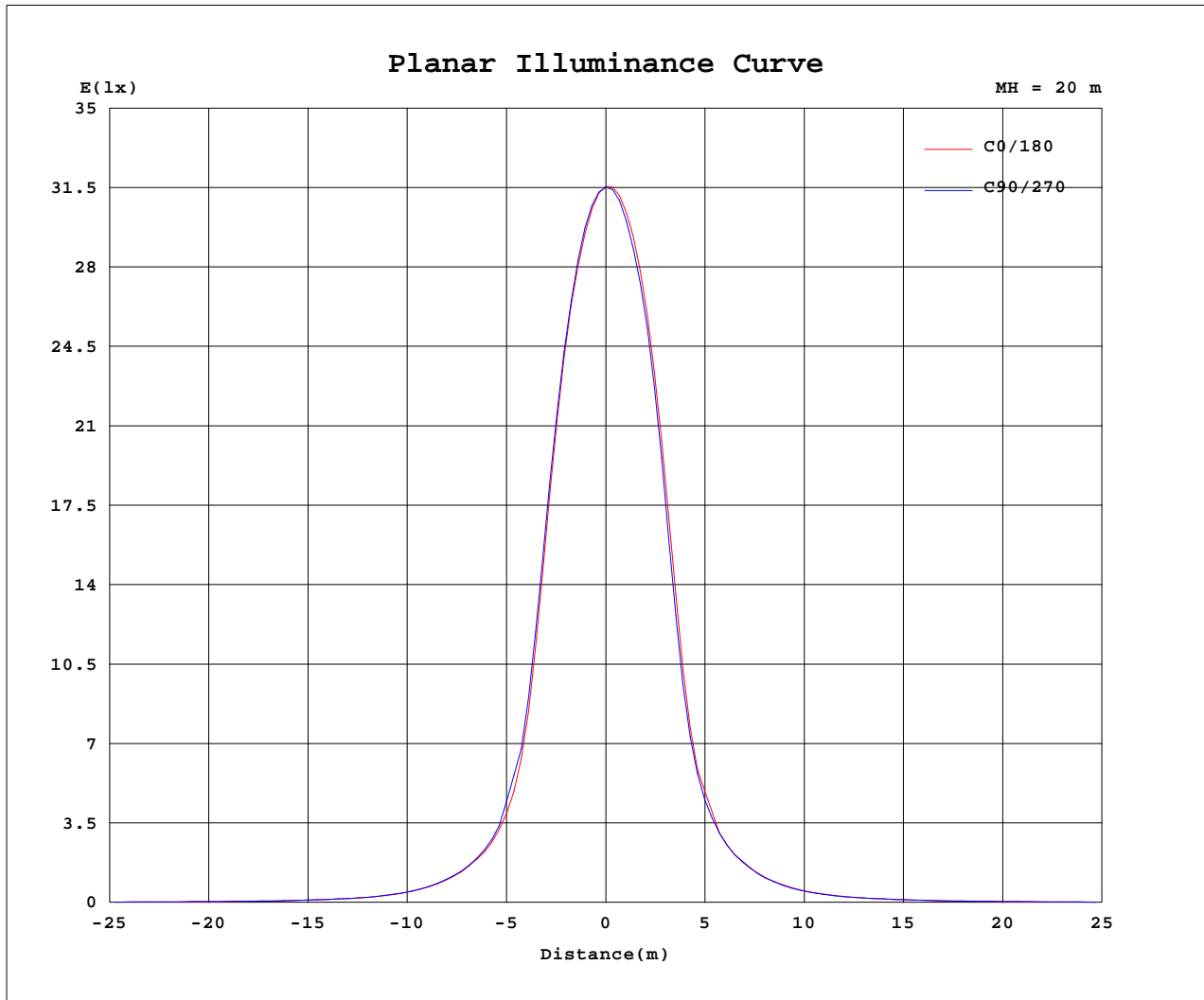
AvgL	cd/m2
L_0~180(65)av	8929
L_0~180(75)av	417
L_0~180(85)av	327
L_90~270(65)av	9563
L_90~270(75)av	474
L_90~270(85)av	313
L_45(65)av	9321
L_45(75)av	397
L_45(85)av	205

Standard: GB/T 29293-2012

C Range: 0 - 360DEG  
C Interval: 30.0DEG  
Test Speed: HIGH  
Temperature:25.3℃  
Operators:zoe  
Test Date:2025-01-02

γ Range: 0 - 180DEG  
γ Interval: 1.0DEG  
Test System:EVERFINE GO-SPEX500\_V1 SYSTEM V2.00.461  
Humidity:65.0%  
Test Distance:3.160m [K=1.0000]  
Remarks: LAMP:BXRE-30G10TH-A-83 Ra:90  
LENS:PM-0132 15R  
NOT DRIVER:48V  
30minutes warm-up

## Planar Illuminance Curve



C Range: 0 - 360DEG  
 C Interval: 30.0DEG  
 Test Speed: HIGH  
 Temperature: 25.3 °C  
 Operators: zoe  
 Test Date: 2025-01-02

γ Range: 0 - 180DEG  
 γ Interval: 1.0DEG  
 Test System: EVERFINE GO-SPEX500\_V1 SYSTEM V2.00.461  
 Humidity: 65.0%  
 Test Distance: 3.160m [K=1.0000]  
 Remarks: LAMP: BXRE-30G10TH-A-83 Ra: 90  
 LENS: PM-0132 15R  
 NOT DRIVER: 48V  
 30minutes warm-up

## LUMINOUS DISTRIBUTION INTENSITY DATA

Test:U:47.997V I:0.3092A P:14.841W PF:1.0000 Freq:49.99Hz Lamp Flux:1994.65x1 lm		
NAME: OZ48-SA-HE-64	TYPE:	WEIGHT:
SPEC.: 3000K	DIM.:	SERIAL No.: 2501020005
MFR.: RISE	SUR.: 0.002826m2	Shielding Angle:

Table--1

UNIT: X10cd

C(DEG) γ (DEG)	0	30	60	90	120	150	180	210	240	270	300	330						
0	1261	1261	1261	1261	1261	1261	1261	1261	1261	1261	1261	1261						
5	1063	1060	1057	1072	1088	1110	1124	1120	1118	1104	1092	1073						
10	472	479	477	500	520	551	568	558	557	530	509	482						
15	144	145	144	151	155	162	177	164	179	165	160	148						
20	64.9	64.8	64.8	67.3	70.5	71.7	72.7	74.0	75.2	74.4	70.8	66.1						
25	31.8	31.2	31.1	32.4	32.9	35.0	36.0	35.4	36.9	35.1	34.3	32.1						
30	16.9	16.6	16.3	16.9	17.0	18.3	19.4	18.9	19.8	18.8	18.0	17.2						
35	10.6	10.7	10.5	10.6	10.6	11.4	11.7	11.8	12.0	11.9	11.3	10.9						
40	7.04	7.15	6.98	7.11	7.00	7.38	7.60	7.81	7.80	7.81	7.36	7.14						
45	5.23	5.33	5.25	5.30	5.26	5.45	5.50	5.63	5.70	5.64	5.45	5.35						
50	4.21	4.30	4.30	4.32	4.35	4.38	4.37	4.47	4.51	4.43	4.39	4.30						
55	3.23	3.29	3.33	3.35	3.34	3.30	3.29	3.32	3.41	3.35	3.35	3.23						
60	2.15	2.24	2.28	2.28	2.23	2.16	2.14	2.12	2.23	2.19	2.21	2.11						
65	1.07	1.10	1.16	1.16	1.15	1.09	1.06	1.06	1.12	1.12	1.12	1.08						
70	0.46	0.48	0.52	0.52	0.51	0.48	0.46	0.44	0.48	0.48	0.48	0.45						
75	0.03	0.04	0.03	0.04	0.03	0.03	0.03	0.02	0.02	0.03	0.02	0.03						
80	0.01	0.01	0.01	0.01	0.01	0.01	0.01	0.01	0.01	0.01	0.01	0.01						
85	0.01	0.01	0.01	0.01	0.01	0.01	0.01	0.01	0.01	0.01	0.01	0.01						
90	0.00	0.00	0.00	0.00	0.00	0.00	0.00	0.00	0.00	0.00	0.00	0.00						
95	0.00	0.00	0.00	0.00	0.00	0.00	0.00	0.00	0.00	0.00	0.00	0.00						
100	0.00	0.00	0.00	0.00	0.00	0.00	0.00	0.00	0.00	0.00	0.00	0.00						
105	0.00	0.00	0.00	0.00	0.00	0.00	0.00	0.00	0.00	0.00	0.00	0.00						
110	0.00	0.00	0.00	0.00	0.00	0.00	0.00	0.00	0.00	0.00	0.00	0.00						
115	0.00	0.00	0.00	0.00	0.00	0.00	0.00	0.00	0.00	0.00	0.00	0.00						
120	0.00	0.00	0.00	0.00	0.00	0.00	0.00	0.00	0.00	0.00	0.00	0.00						
125	0.00	0.00	0.00	0.00	0.00	0.00	0.00	0.00	0.00	0.00	0.00	0.00						
130	0.00	0.00	0.00	0.00	0.00	0.00	0.00	0.00	0.00	0.00	0.00	0.00						
135	0.00	0.00	0.00	0.00	0.00	0.00	0.00	0.00	0.00	0.00	0.00	0.00						
140	0.00	0.00	0.00	0.00	0.00	0.00	0.00	0.00	0.00	0.00	0.00	0.00						
145	0.00	0.00	0.00	0.00	0.00	0.00	0.00	0.00	0.00	0.00	0.00	0.00						
150	0.00	0.00	0.00	0.00	0.00	0.00	0.00	0.00	0.00	0.00	0.00	0.00						
155	0.00	0.00	0.00	0.00	0.00	0.00	0.00	0.00	0.00	0.00	0.00	0.00						
160	0.00	0.00	0.00	0.00	0.00	0.00	0.00	0.00	0.00	0.00	0.00	0.00						
165	0.00	0.00	0.00	0.00	0.00	0.00	0.00	0.00	0.00	0.00	0.00	0.00						
170	0.00	0.00	0.00	0.00	0.00	0.00	0.00	0.00	0.00	0.00	0.00	0.00						
175	0.00	0.00	0.00	0.00	0.00	0.00	0.00	0.00	0.00	0.00	0.00	0.00						
180	0.00	0.00	0.00	0.00	0.00	0.00	0.00	0.00	0.00	0.00	0.00	0.00						

C Range: 0 - 360DEG  
C Interval: 30.0DEG  
Test Speed: HIGH  
Temperature:25.3℃  
Operators:zoe  
Test Date:2025-01-02

γ Range: 0 - 180DEG  
γ Interval: 1.0DEG  
Test System:EVERFINE GO-SPEX500\_V1 SYSTEM V2.00.461  
Humidity:65.0%  
Test Distance:3.160m [K=1.0000]  
Remarks: LAMP:BXRE-30G10TH-A-83 Ra:90  
LENS:PM-0132 15R  
NOT DRIVER:48V  
30minutes warm-up